

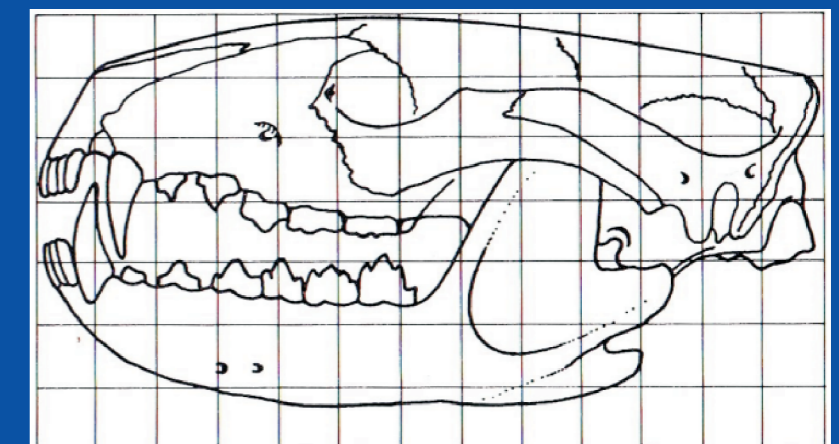
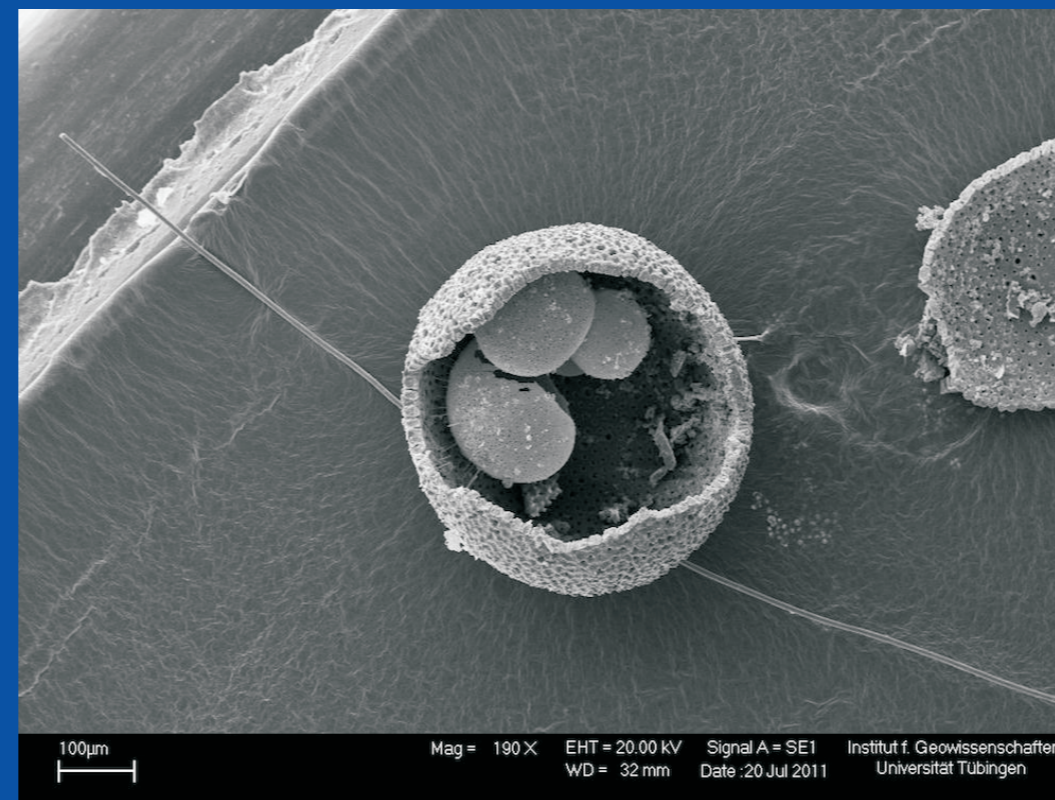
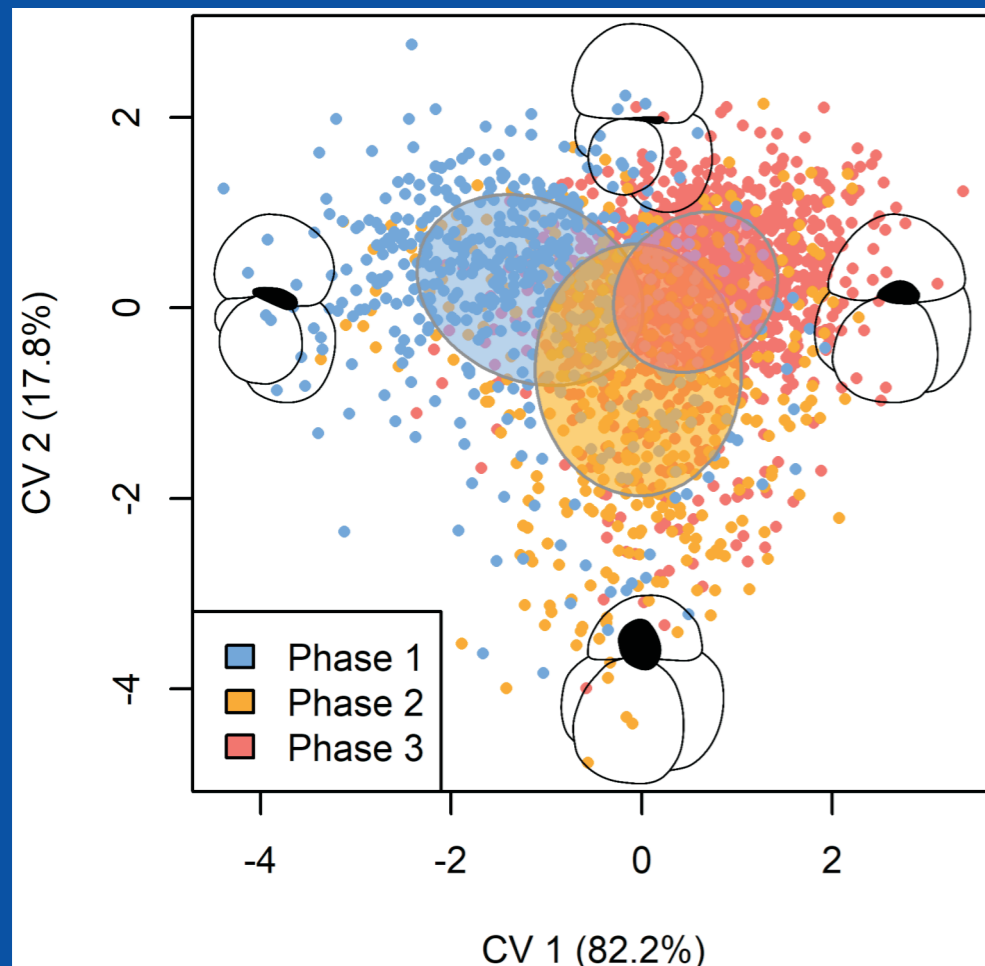


Morphometrics and beyond: What biometry can tell you about an organisms life

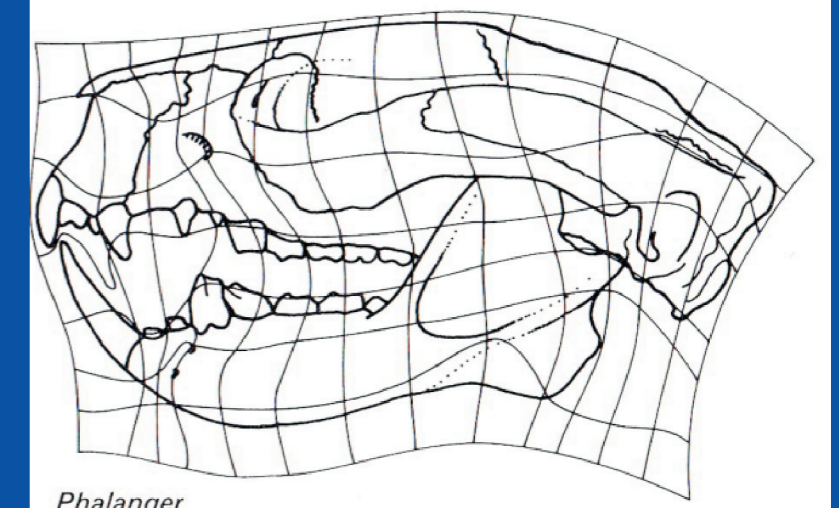
Manuel Weinkauff

University of Geneva

The shape of an organism is an easily observable but difficult to quantify characteristic, yet its study can serve as a gateway into functional ecological, phylogenetic, and systematic analyses. This presentation will introduce you into the world of morphometrics and their applications, unraveling the premises of shape studies for the field of ecology and evolution.



Dasyurus



Phalanger