

# Connecting to Eduroam via Microsoft Windows XP

The following instructions are intended for users who wish to connect to eduroam network using Microsoft XP Service Pack 2.

1. Click on the **[Start]** menu and navigate to **[Control Panel]** followed by **[Network Connection]**
2. Select the **[Wireless Network Connection]**, right-click the icon and select **[Properties]**
3. In the window that appears (Figure 1) select the **[Wireless Networks]** tab followed by the **[Add]** button and enter the network name as "eduroam" and the details listed in (Figure 2)

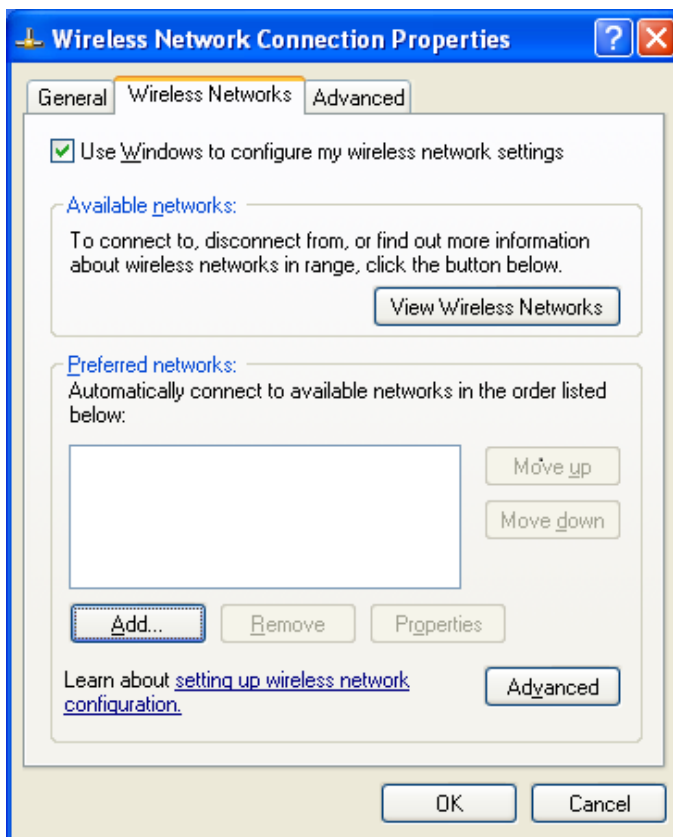


Figure 1

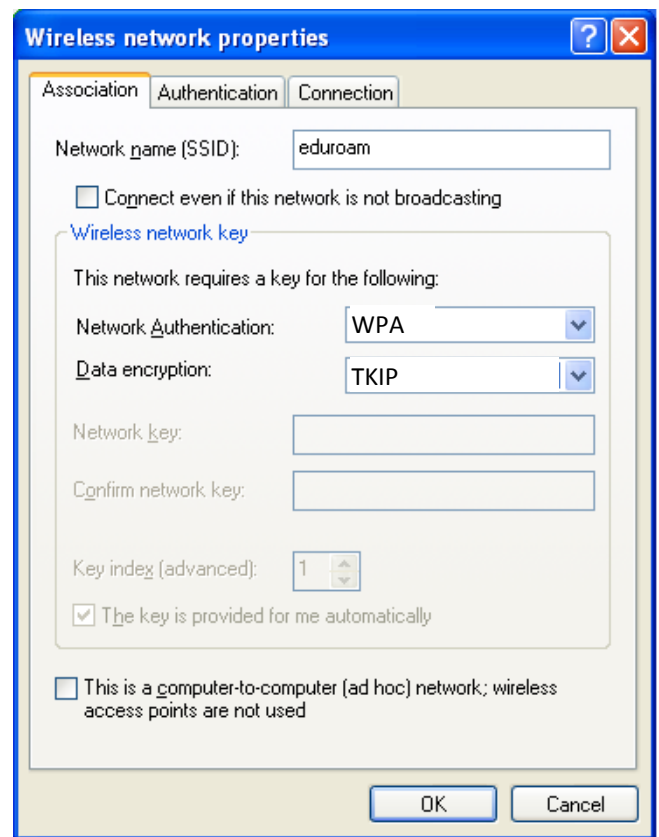


Figure 2

1. Select the **[Authentication]** tab and replicate the values that are shown in (Figure 3). Once this has been done select the **[Properties]** button and check the box called **[Validate Server Certificate]** and **[Connect to these Servers]** in the windows that appears and enter the following value in the field **[iradius.natur.cuni.cz]**. Also check the box called **[AddTrust External CA Root]** and **[UTN-USERFirst - Hardware]**
- 2.

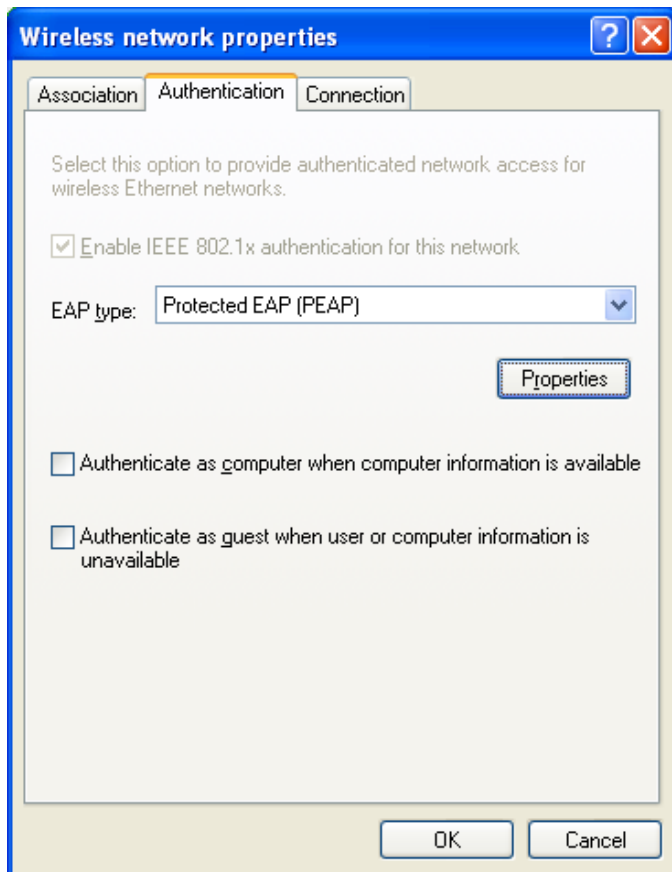


Figure 3

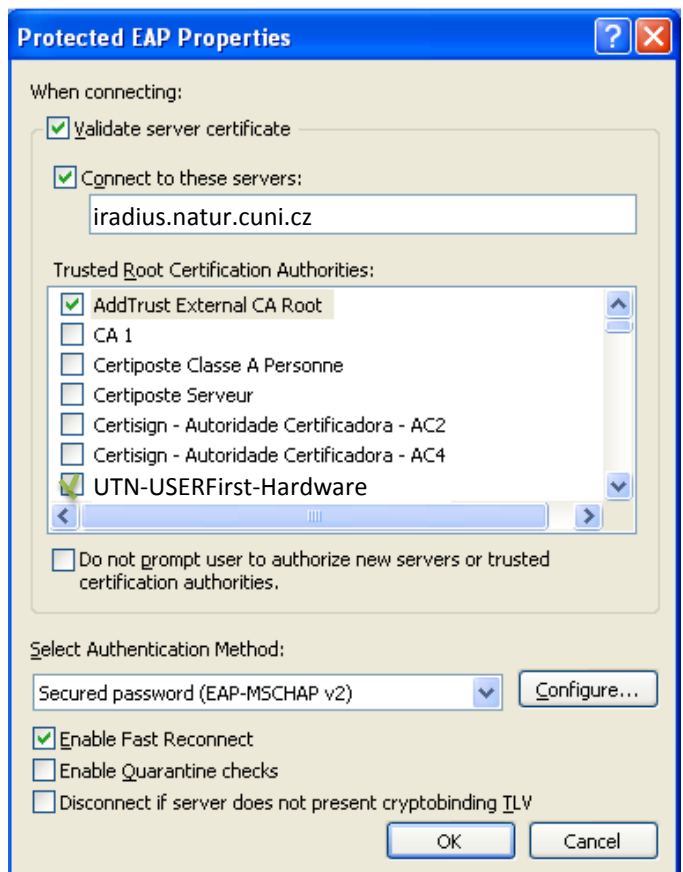


Figure 4

3. In the **[Protected EAP Properties]** window select the **[Configure]** button and **uncheck** the option for **[Automatically use my Windows Logo name and Password]** and click **[ok]**.
4. Click **[ok]** through each menu to save your settings.
5. If you are within range of the "eduroam" service you will see the following message (Figure 5)

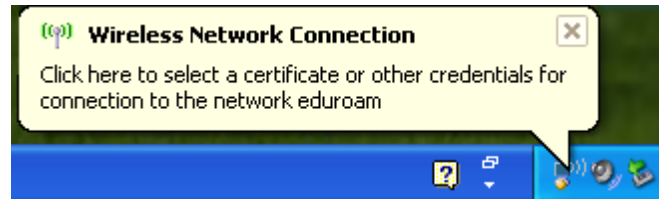


Figure 5

6. Click on the message and you will be presented with the following window (Figure 6). Enter your credentials in the following format:

***Username: your\_login@natur.cuni.cz***

***Password: your CAS password***



Figure 6

Users of the eduroam service must abide by Charles University's Code of Conduct, and any equivalent policies at visited institutions, in addition to the eduroam policy.

It is the responsibility of the user to ensure their device is password protected to secure any saved credentials stored on the machine used for accessing eduroam. This may be in the form of a passcode on a mobile apple device for example, or windows user account equivalent.

If you are having trouble connecting to eduroam using these instructions please contact the Faculty Help Desk on <http://helpdesk.natur.cuni.cz>.