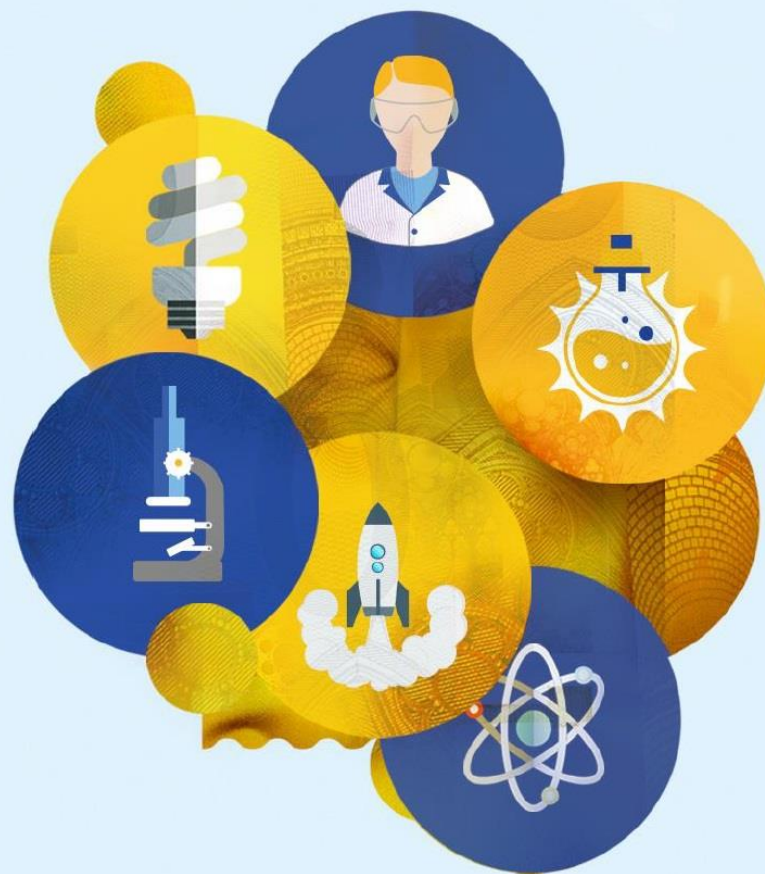


# Horizon Europe

THE NEXT EU RESEARCH & INNOVATION  
INVESTMENT PROGRAMME (2021 – 2027)



FACULTY OF  
SCIENCE  
Charles University

**Klára Sobotíková, Tomáš Palatý**

Project Management Department

Info event on Horizon Europe, 10. 2. 2021

# Project Management Department

- The Project Management Department provides the **informative, administrative**, prospectively even **organizational support for the grant activities** of scientific and pedagogical employees of the faculty.

## Support in funding schemes:

- National funding system
- European structural funds
- International research funding schemes – today focused on **collaborative projects in Horizon Europe programme**



# Horizon Europe collaborative projects

## When to ask for help and who?

### 1) Pre-award phase of Support – Klára Sobotíková

- You have an idea and **plan to apply**
- You need to **prepare the proposal**
- You need to **submit the proposal**

### 2) Post-award phase of Support – Tomáš Palatý

- You **obtained the grant** you asked for
- You need to help with preparation **Grant Agreement**
- You need administrative support during the **implementation** of the project



# Pre-award phase support

- Funding opportunities – [websites](#) & newsletter every 2 weeks
- ERC & Marie Skłodowska-Curie Actions (special event)
- **Horizon Europe collaborative projects**
  - ❖ Help to set a plan, find partners
  - ❖ Support during proposal preparation process by consultations & feedback
  - ❖ Administrative support in proposal submission process (Funding & Tenders portal, attachments)
  - ❖ Communication with the Rectorate, TC, keeping you informed
  - ❖ After submission – „Waiting phase“



# Post-award phase support

- Preparation of the GA for signature, preparation of all other documents needed
- Budget and financial supervision
- Administrative background support, consultations with project managers
- Communication with the departments of the Dean's office involved in the project administration
- Communication with the Czech NCPs for Horizon Europe programme



# Future steps – Data Management Plan

- Key element of good data management, part of making research data Findable, Accessible, Interoperable and Re-usable (FAIR).
- **In Horizon Europe also used as a tool of open access to the research data.**
- In some calls, the Data Management Plan will have to be included as a part of the project proposal.
- The **special info event** focused on Open access and Data Management Plan is planned to be held by the Faculty of Science in the **second half of March.**



# Points for discussion

- What we, as **your support**, need?

## Information

- Information in time
- Information about your plans
- Information that you are interested

- What do you as **applicants**, need?
- What can we do to **enhance** cooperation?
  - Communicate
  - Cooperate
  - Share





FACULTY OF  
SCIENCE  
Charles University

**Thank you for your attention!**

**Klára Sobotíková:** [klara.sobotikova@natur.cuni.cz](mailto:klara.sobotikova@natur.cuni.cz)

**Tomáš Palatý:** [tomas.palaty@natur.cuni.cz](mailto:tomas.palaty@natur.cuni.cz)

---